

Northwest division:  
**Centura Building Systems Ltd.**  
 460 Fraser View Place  
 Delta, BC, V3M 6H4  
 CANADA  
 T:604.522.4980  
 F:604.522.1604  
 Toll-free 1.866.378.2288

Southwest division:  
**Lakeview Building Systems Inc. &  
 Lakewood Building Systems Inc.**  
 205 16th Street  
 San Diego, CA, 92101  
 USA  
 T:619.531.0693  
 F:619.531.0697  
 Toll-free 1.866.378.2288

Visit us at [www.niradia.com](http://www.niradia.com)

## Mission Statement

- To provide clients with complete, functional solutions utilizing all the proven construction methods while incorporating advanced and innovative techniques.
- To be a valuable team member, to bring the project on budget, and on time

## Products & Services

- Prefabricated architectural and structural building panels
- Rain screen stucco systems
- Structural and miscellaneous steel detailing and fabrications
- Light gauge structural framing
- Batt and rigid insulation
- Demountable partitions
- Metal linear ceilings
- Acoustic ceilings
- Drywall

# GFRC PANELS

Innovative, Versatile Light Weight Exterior Panels

Glass Fiber Reinforced Concrete (GFRC) - one of the most innovative construction materials available today facilitates unprecedented opportunities for building design.

GFRC is a portland cement based composite with alkali-resistant glass fiber, randomly dispersed throughout the product. Because the glass fiber adds flexural, tensile and impact strengths, the resulting material allows the production of strong—yet lightweight - architectural cladding panels.

GFRC panels are delivered to site with integrated steel stud frames ready to receive the interior wall board, saving the expense of exterior stud framing on site. The low weight of the GFRC panels (12-16 psf) decrease the

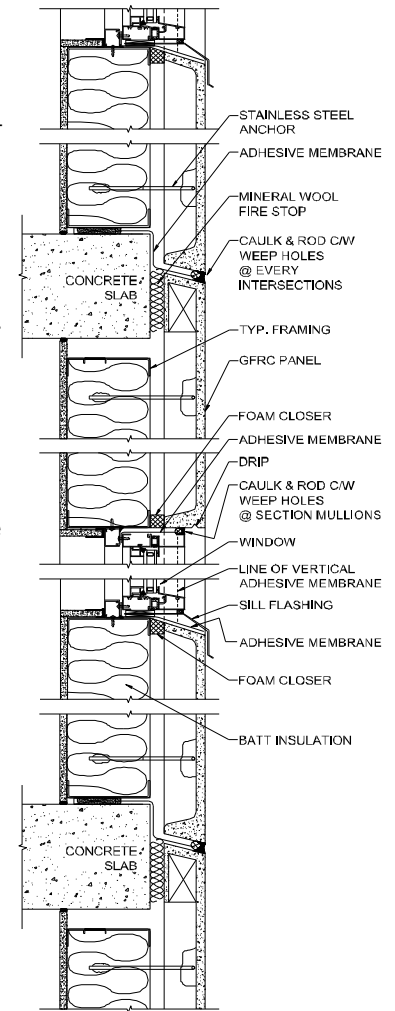
superimposed loads on the building's structural framing and foundation, thus providing potential savings for construction costs.

A wide variety of attractive patterns and surface textures, colors, and decorative aggregates can be achieved. Different shapes can be used in infinite number of forms. These non-combustible panels easily achieve 2-hour fire rating with listed UL assemblies. And, as an added protection, a rain-screen treatment can be installed on site.

GFRC panels are designed and manufactured according to the industry standard as set by the PCI design manual MNL-128-01.



Curved profiled GFRC spandrel



GFRC Wall Section



Silver Cloud Inn, Seattle, WA, GFRC spandrel panels loaded and ready to ship to site. These are the bay windows.



Silver Cloud Inn, Seattle, WA, panel installation



Allegro Tower, San Diego, CA, GFRC panels