

Northwest division:
Centura Building Systems Ltd.
 460 Fraser View Place
 Delta, BC, V3M 6H4
 CANADA
 T:604.522.4980
 F:604.522.1604
 Toll-free 1.866.378.2288

Southwest division:
**Lakeview Building Systems Inc. &
 Lakewood Building Systems Inc.**
 205 16th Street
 San Diego, CA, 92101
 USA
 T:619.531.0693
 F:619.531.0697
 Toll-free 1.866.378.2288

Visit us at www.niradia.com

Mission Statement

- To provide clients with complete, functional solutions utilizing all the proven construction methods while incorporating advanced and innovative techniques.
- To be a valuable team-member, to bring the project on budget, and on time

Products & Services

- Prefabricated architectural and structural building panels
- Rain screen stucco systems
- Structural and miscellaneous. steel detailing and fabrications
- Light gauge structural framing
- Batt and rigid insulation
- Demountable partitions
- Metal linear ceilings
- Acoustic ceilings
- Drywall

BRICK PANELS

Innovative, Versatile Exterior Panels

This panel system utilizes thinner bricks, manually laid down in a mold, with a thin layer of concrete backing and a steel stud reinforcing frame connected to concrete with stainless steel anchors. This system provides a compelling economic alternative to traditional site installed brick for medium to high rise structures. The factory built panels eliminate the need to scaffold the exterior of the building and can be rapidly installed even in adverse weather conditions.



Laid down brick in curved mold

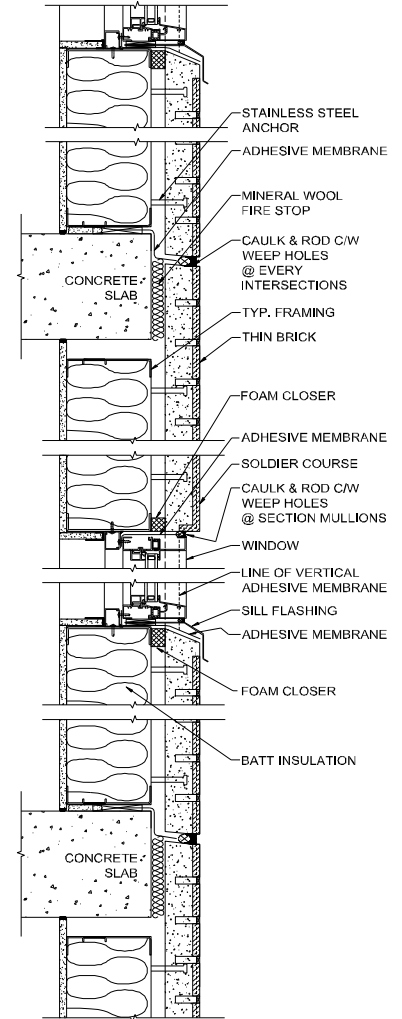
Some of the advantages of this innovative system:

- real bricks with sharp crisp joints.
- Skin is separated from framing to eliminate thermal bridging and

reduce condensation.

- Cavity between skin and framing can be equipped with air vapor barrier to form effective rain screen.
- Curved and 3-D panels are possible
- Batt insulation and wiring ready to fit in integrated stud cavity.
- Medium weight panels (40 psf) will not require the heavier embed hardware associated with heavier precast concrete panels.

- All traditional brick bonds and orientations are easily accommodated.
- This non-combustible panel easily achieves 2-hour fire rating.



BRICK Wall Section



Genesis Tower , Vancouver, BC, Canada



Silver Cloud Inn, Seattle, WA, USA, curved full height and spandrel panels



Silver Cloud Inn, Seattle, WA, USA, curved full height and spandrel panels